

Central Brass Company, Inc.
3325 S. Garfield Ave.
Commerce, CA 90040
(800) 321-8630
www.centralbrass.com

Tools:



Adjustable Wrench



Plumbers Putty



Teflon Tape



Rags

Model Number: 0850, 0858, 0868, 0950, 0958, 0968, 0951, 0961, 0971, TC-3, T-3 Series

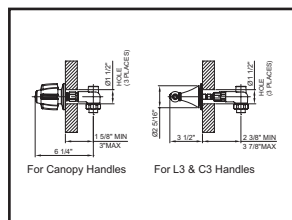
Warnings and Notes:

Check with local plumbing code requirements before installation.
This product should be installed by a local listed plumber.
Do not use plumbers putty on threads.

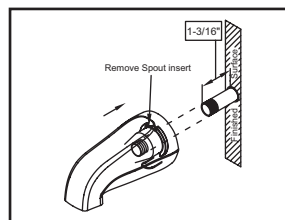


Installation Steps:

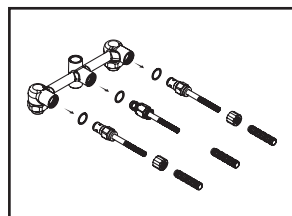
Three Handle Tub & Shower Set



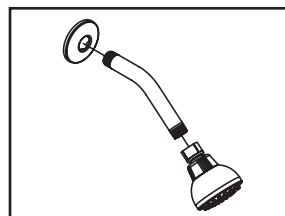
(1) Determine the location of the valve to be installed for new installation. For existing installation look at the installation drawing and ensure there is enough room to install the valve.



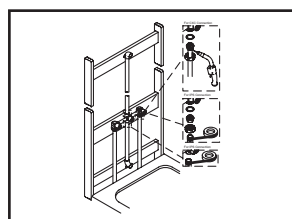
(4b) For IPS tub spout installation: The 1/2" pipe thread nipple must be kept at a minimum length of 1-3/16" from finished surface of tub or wall. Remove Allen screw, twist and remove spout insert by using 1-1/32" size socket. Also remove black washer. Apply Teflon tape at threaded end of nipple. Screw tub spout onto the nipple and tighten by strap wrench.



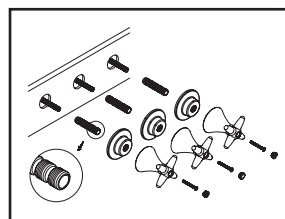
(2) Install the outlet connections. Apply Teflon tape at threaded connections. Install inlet connections. Hot water supply should be on the left hand side and cold water supply should be on the right hand side.



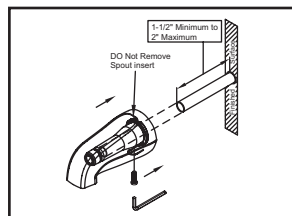
(5) Caution: Only use Teflon tape on the thread ends of shower arm to avoid plugging showerhead spray outlet. Use silicon to caulk the back of shower arm flange. Slide shower arm flange over shower arm. Apply Teflon tape on both thread ends of shower arm and install shower arm, carefully tighten shower arm with help of strap wrench. Press shower arm flange against finished wall. Turn on water to flush system. Turn off water and attach showerhead to shower arm.



(3) For CXC installation: Remove all stems and transfer valve (for two handle valve) out of valve body before soldering inlet connections to prevent parts from being damaged, install stems and transfer valve back to valve body after valve body has cooled down. Warning: Always fully open (counterclockwise turn to the end) diverter stem before remove/install diverter stem to prevent from damaging Celcon washer.



(6) For L3 and C3 Handles:- Ensure the distance between center of valve inlets to wall is 2-3/8" Min. to 3 7/8" Max. If needed then mark the distance from the end of the replacement brass nipple. Carefully cut the nipple at the outer edge of the step closest to the mark. Carefully cut stem post similarly but at the inner edge of the step. Avoid cutting the spline and threaded area. The cut must be straight and all burrs removed. For All Installation:- Thread escutcheon to the valve. Use silicon to caulk the back of the escutcheon. Install the cold, hot and diverter handles. Install the screws. For L3 and C3 handles place the caps.



(4a) For slip-fit tub spout installation: The 1/2" nominal copper tube must be cut with a minimum length of 1-1/2" to a maximum length of 2" from finished surface of tub or wall. The end of copper tube should be chamfered free of any burrs to prevent cutting or nicking O-ring inside the spout. The outside surface should be sanded free from nicks and scratches. Press and twist the spout over copper tube flush with the finished tub or wall surface. Tighten the set screw, but do not overtighten.